

## Power Meter

3-phase Ethernet transducer  
for AC•THOR or AC ELWA-E

# Operation Manual



## 1. Assembly

Before placing into operation it is essential to read the assembly instructions provided with the device.

**⚠️ Connect the current transducers to the Power Meter first, afterwards attach to the wires of the house! Another approach could lead to the induction of dangerous voltages in the metering leads and/or damage the current transducers!**

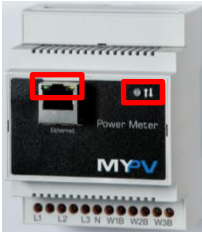
**⚠️ When installing the current transducers, beware of phase assignment and direction!**

## 2. Commissioning; putting back into service

The three clamp-on transducers of the Power Meter are installed directly after the power supply meter in the distribution cabinet and measure the load flow.

**⚠️ On commissioning, no special settings are required at the Power Meter!**

**⚠️ The wiring diagrams are found in the assembly instructions supplied with the Power Meter and also in their latest version at any time on [www.my-pv.com](http://www.my-pv.com).**



## Indicator elements

A green LED on the Power Meter shows that power is being supplied. The indicator flashes as the network connection is being established.

The green and yellow LEDs on the RJ45 grid plug indicate that the physical connection to the grid connection is intact.

## 3. Operating modes

### Connection via router

DHCP is activated as standard at the Power Meter, meaning that the unit itself obtains an IP address from the router to which it is connected. This only works when the router is configured as a DHCP server.

For the required settings of AC•THOR or AC ELWA-E, please also refer to the notes in the respective operating instructions at [www.my-pv.com](http://www.my-pv.com).

### Web-Interface

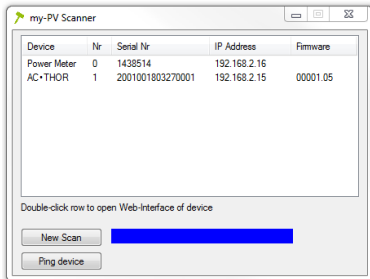
If connection to AC•THOR or AC ELWA-E is by way of network, access to the Power Meter web interface is possible.



For operation no special settings are necessary in the web interface!

Expiry of the network connection:

1. After the connection using a patch cable the Power Meter is assigned a dynamic IP address by the router. It can then be searched for in the network using the program "my-PV Scanner.exe" (included in the "Software package Power Meter.zip" on [www.my-pv.com](http://www.my-pv.com)).



2. The web interface opens by double clicking on the respective search result.



Scanning is performed via UDP port 16124. Firewalls (or specific router settings) may prevent the devices from being found.



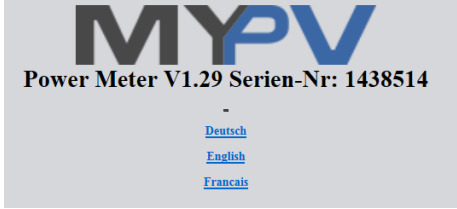
TIP: You will also find the IP address of the Power Meter in the DHCP list in the router!



my-PV does not recommend to connect the Power Meter to the Internet via port forwarding access!

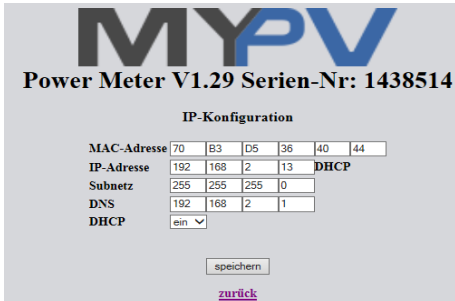
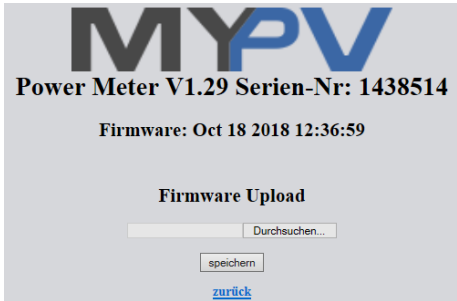
On the request for the password no input is necessary!

If a static IP address is desired, a fixed assignment is possible.



The Power Meter firmware can also be updated via the web interface.

This is included in the "Software Package Power Meter.zip" on [www.my-pv.com](http://www.my-pv.com).



Consider that the appearance and the scope of options can change with updated software versions.

## Direct connection without router

Connection to AC•THOR or AC ELWA-E without network is established by means of crossover network cable directly between the units.

For the required settings of AC•THOR or AC ELWA-E, please also refer to the notes in the respective operating instructions at [www.my-pv.com](http://www.my-pv.com).

"Power Meter Direct" has to be defined as signal source.



Use a crossover network cable!



No access is possible to the web interfaces of the devices!

## Direct connection via powerline without router

Connection to AC•THOR or AC ELWA-E without network is established via powerline connection directly between the units. No network crossover cables are needed for this, perfectly normal network cables can be used.

For the required settings of AC•THOR or AC ELWA-E, please also refer to the notes in the respective operating instructions at [www.my-pv.com](http://www.my-pv.com).

"Power Meter Direct" has to be defined as signal source.



Use a powerline adapter on the same phase!



No access is possible to the web interfaces of the devices!

## 4. Technical specifications

### POWER METER

Measuring range	0 – 60 A (higher currents are possible, using other clamp-on transducers). 230 V AC ( $\pm 10\%$ )
Interface	Ethernet (encrypted)
Dimension (W x H x D)	71 x 90 x 58 mm
Protection	IP 20
Connection technology	Screw clamps
Clamps, cross-section	2.5 mm <sup>2</sup> tags / 4 mm <sup>2</sup> wires
Tightening torque, clamps	0.6 Nm
Insulation stripping length, clamps	6 mm
Weight	ca. 175 g
Construction	35 mm standard track
Ambient temperature	0 ... 50 °C
Storage and transport	-10 ... 70 °C (avoid condensation)
Power supply	via measured voltage L1
EMC	
Product family standard	EN 61326
Fault transmission	EN 55011, CISPR11 Kl. B AS 61010.1
CLAMP-ON TRANSDUCER	
Recordable cable diameter	max. 10 $\pm$ 0.3 mm
Dimension (W x H x D)	39 x 26 x 23 mm
Weight	3 x 60 g



To measure currents of over 60 amps the use of other clamp-on transducers is possible. For further details, please contact my-PV: [info@my-pv.com](mailto:info@my-pv.com)

my-PV GmbH  
Teichstrasse 43, A-4523 Neuzeug  
[www.my-pv.com](http://www.my-pv.com)

Subject to change without notice.

**MYPV**

## 5. Warranty

This warranty is given by Energy Smart Water Pty. Ltd. 2/11 Dalkeith Drive, Dromana Vic 3936.  
ABN 65 161 756 690

### Terms of Warranty

This Warranty covers any defects in materials when the product is installed and operated according to the written installation instructions, subject to the terms within this Limited Warranty document. Improper installation may void this Warranty. This Warranty extends to the original purchaser and subsequent owners, but only while the product remains at the site of the original installation. This Warranty only extends through the first installation of the product and terminates if the product is moved or reinstalled at a new station.

Replacement of the product may be authorized by Energy Smart Water only. Energy Smart Water does not authorise any person or company to assume for it any obligation or liability in connection with the replacement of the product. If a component or product returned to Energy Smart Water is found to be free of defects in material or workmanship, or damaged by improper installation or damaged during return shipping, the warranty claim for product, parts and labour may be denied.

Proof of purchase is required to obtain warranty service. You may show proof of purchase with a dated sales receipt, credit card statement or other proof of purchase. In the first instance, you should contact Energy Smart Water by email or telephone and point out the defect.

All Energy Smart Water products are carefully checked, tested and subject to stringent quality controls. Energy Smart Water will repair or replace the covered product or any part or component that is defective in materials or workmanship as set forth as follows:

<b>Product (equipment only)</b>	<b>Warranty Period</b>
<ul style="list-style-type: none"><li>myPV Power Meter</li></ul>	2 years

### Purchaser's Statutory Rights

Our goods come with guarantees that cannot be excluded under the Australian Consumer Law. You are entitled to a replacement or refund for a major failure and compensation for any other reasonably foreseeable loss or damage. You are also entitled to have the goods repaired or replaced if the goods fail to be of acceptable quality and the failure does not amount to a major failure.

### Conditions of Warranty

- Supplied product must only be installed, commissioned or serviced by a licensed electrician in accordance with all electrical standards, municipal building codes, occupational health, safety & welfare regulations, and other State or Federal statutory regulations.
- The connection, attachment, integration or general association of other equipment or parts that are not specified by Energy Smart Water which either directly or indirectly affect the performance or operation of this equipment could void warranty.

### Warranty Exclusions

- Where the product has not been installed, operated, maintained or serviced in accordance with the instructions supplied by Energy Smart Water Pty Ltd.

## 5. Warranty Exclusions (continued)

- Where the product is not used according to the project specification
- Where the product is misused, damaged, neglected, abused, operated outside of instructions in this manual.
- Where damage is caused by an act of God, fire, lightning, flood, earthquake, landslide, storm, hail, frost, wind or other severe adverse weather conditions.
- Where any attempt has been made to repair the product other than by Energy Smart Water Pty Ltd Accredited Service Agent.
- Where attempts to replace parts / maintain / repair without approval of Energy Smart Water Pty Ltd.
- Where the product is located in a position that does not comply with the installation instructions or relevant statutory requirements
- Where the product is moved or reinstalled at a new location
- Where access to the product requires dismantling or removal of cupboards, doors or walls, or use of special equipment to gain access or relocate water heater ground level or to a serviceable position.
- A call out fee is chargeable where it is found there is no fault with the product
- Consequential damage, in particular to the connected loads
- Altering, disassembling or otherwise intervening in the device or making changes to the device without authorisation

### Authorised Distributor

#### Energy Smart Water

2/11 Dalkeith Drive, Dromana Vic 3936, Australia

T: +61 3 9939 6722 | E: [esw@esw.net.au](mailto:esw@esw.net.au) | [www.esw.net.au](http://www.esw.net.au)

